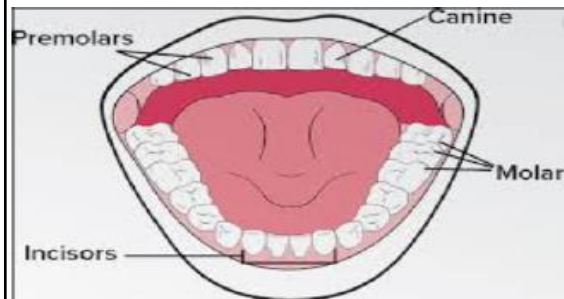


Key Concepts

Key Vocabulary

What is the role of teeth and how do we look after them?

- Teeth are used for cutting and chewing food.
- They start the digestive process which gives us the energy we need to live.
- Humans look after their teeth by brushing and flossing and ensuring that they do not eat foods high in sugar.
- Not looking after teeth can lead to an increase in plaque and tooth decay

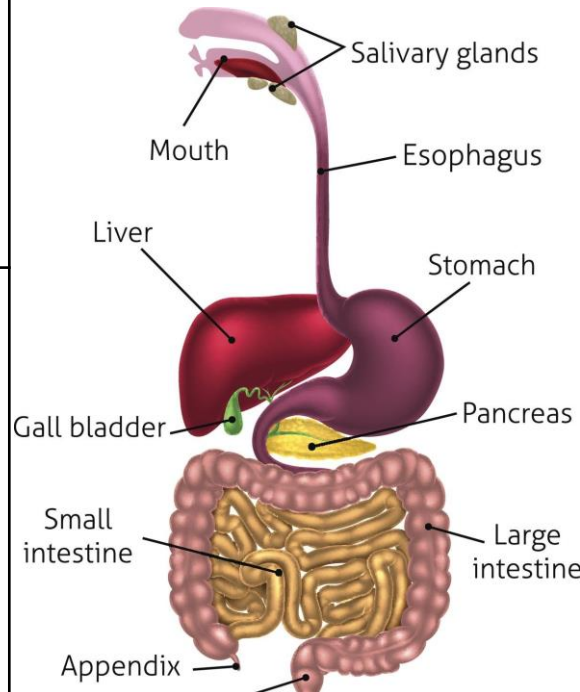


What are the different types of teeth and what are they used for?

- Canines are pointed for tearing and ripping food – these are usually used when chewing meat.
- Incisors are shovel shaped and help bite lumps out of and cutting food.
- Premolars and molars are flat and they grind and crush food.

The Digestive System

- The smell of food triggers saliva to be produced.
- The digestive system begins with the mouth and teeth where food is ingested and chewed.
- Saliva is mixed with the food which helps to break it up.
- When the food is small enough to be swallowed, it is pushed down the oesophagus by muscles to the stomach.
- In the stomach, food is mixed further.
- The mixed food is then sent to the small intestine which absorbs nutrients from the food.
- Any leftover broken down food then moves on to the large intestine.
- The food minus the nutrients arrives in the rectum where muscles turn it into faeces. It is stored here until it is pushed out by the anus. This is called excretion.






Famous Scientists



William Beaumont (1785-1853) was a surgeon in the U.S. Army who became known as the "Father of Gastric Physiology" following his research on human digestion.

canine	Pointed teeth near the front of the mouth
decay	Gradually destroyed by a natural process
digestion	Breaking down ingested food material
enamel	The hard white substance that forms on the outer part of a tooth
excretion	The process of eliminating faeces, urine or sweat from the body.
faeces	The solid waste substance
incisor	The teeth at the front of your mouth
intestines	The tubes in your body through which food passes when it has left your stomach
molar	The large flat teeth towards the back of the mouth
oesophagus	The part of your body that carries food from the throat to the stomach
premolar	Two situated on each side of both jaws between the first molar and the canine
saliva	Watery liquid that forms in your mouth to help you chew and digest food.

Working Scientifically Skills

??	Using Scientific knowledge to ask questions.		Using scientific language to draw conclusions.
	Recognising when to use other sources to answer questions and separating opinion from fact.		Using and developing keys to identify and classify living things and materials