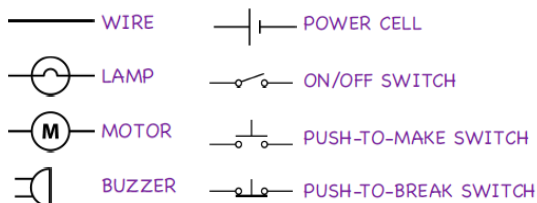


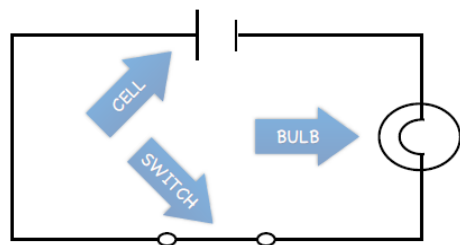
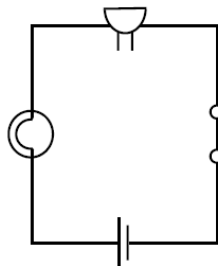
Technical knowledge

Alarms are used every day in all kinds of industries. We use an alarm to wake up for school in the mornings, a fire alarm to warn us when there is danger and we hear alarms every day in the streets, whether they are a police car, ambulance or even someone beeping their horn in a car. All alarms are heard by a circuit and a buzzer. The circuit passes electricity through the wires to power up the buzzer that makes a sound.

Circuit symbols



Simple switch



Electrical circuits must be closed in order to work.

Keeping safe

No water around Electricity - Keep drinks and other liquids away from electrical equipment. Make sure your hands are dry. Don't touch or use damaged equipment - Look carefully at your equipment before you use it. If wires are damaged or batteries are leaking, get an adult! Don't make short circuits- What are short circuits? If you make a circuit without a bulb, a buzzer or a motor, it can overheat and might catch fire!

Key Vocabulary

Alarm	Something that makes a sound and alerts you.
Switch	Something that you turn on and off.
Circuit	An uninterrupted flow of electricity.
Bulb	Provides light.
Buzzer	Makes a sound/warning sound.
Push to break switch.	This switch can break a circuit when the button is pressed and stops the flow of electricity.
Push to make switch.	This switch when pushed closes the circuit and allows electricity to flow, sounding the alarm.
Sliding switch	A two-position switch used to control the current flow in a circuit.

Alarms around the world



Alarm clock



Egg timer



Smoke alarm



Burglar alarm

Questions to think about



What are the best things about my design?

What did I most enjoy about making my design?

What aspects of the designs of others do I most like/find most interesting?

What DT skills should I try to learn and/or improve?

What aspects of my design could I improve?